

**LEGEND**

- FULLY CONTROLLED ACCESS HIGHWAY
- MULTI-LANE HIGHWAY
- TRUNK ROUTE
- PROPOSED STATE ROAD AND BOULEVARD
- STATE MAINTAINED BRIDGE
- TOWNSHIP ROAD
- TOWNSHIP ROAD (HEAVY CONCRETE)
- OTHER ROAD
- INTERSTATE INTERCHANGE NUMBER
- INTERSTATE TRAFFIC ROUTE
- UNITED STATES TRAFFIC ROUTE
- PENNSYLVANIA TRAFFIC ROUTE
- PAVING BY SEVERAL
- PAVING AGREED (TRUCK ROUTES)
- STATE LINE
- COUNTY LINE
- TOWNSHIP LINE
- INCORPORATED CITY
- INCORPORATED BOROUGH
- STATE CAPITAL
- COUNTY SEAT
- CITY GOVERNMENT
- COLLEGE OR UNIVERSITY
- STATE POLICE FACILITY
- COURTHOUSE
- STATE ADMINISTERED HISTORIC PROPERTY
- FEDERAL STATE INTERSECTION
- FORMER SITE FACILITY
- FOURS OF INTEREST
- WATER MADE TRADE
- HAZARDOUS MATERIAL
- HAZARDOUS WASTE FACILITY
- HAZARDOUS WASTE AND EMERGENCY FACILITY
- STATE FISH WATERSHED
- STATE FOREST NATIONAL AREA
- STATE FOREST PLANNING AREA
- FEDERAL RECREATION SITE
- STATE PARK LAND (HEADQUARTERS)
- STATE GAME LAND AND NUMBER
- STATE AND FEDERAL FOREST LAND
- FEDERAL PARK / RECREATION LAND
- FEDERAL RESERVATION

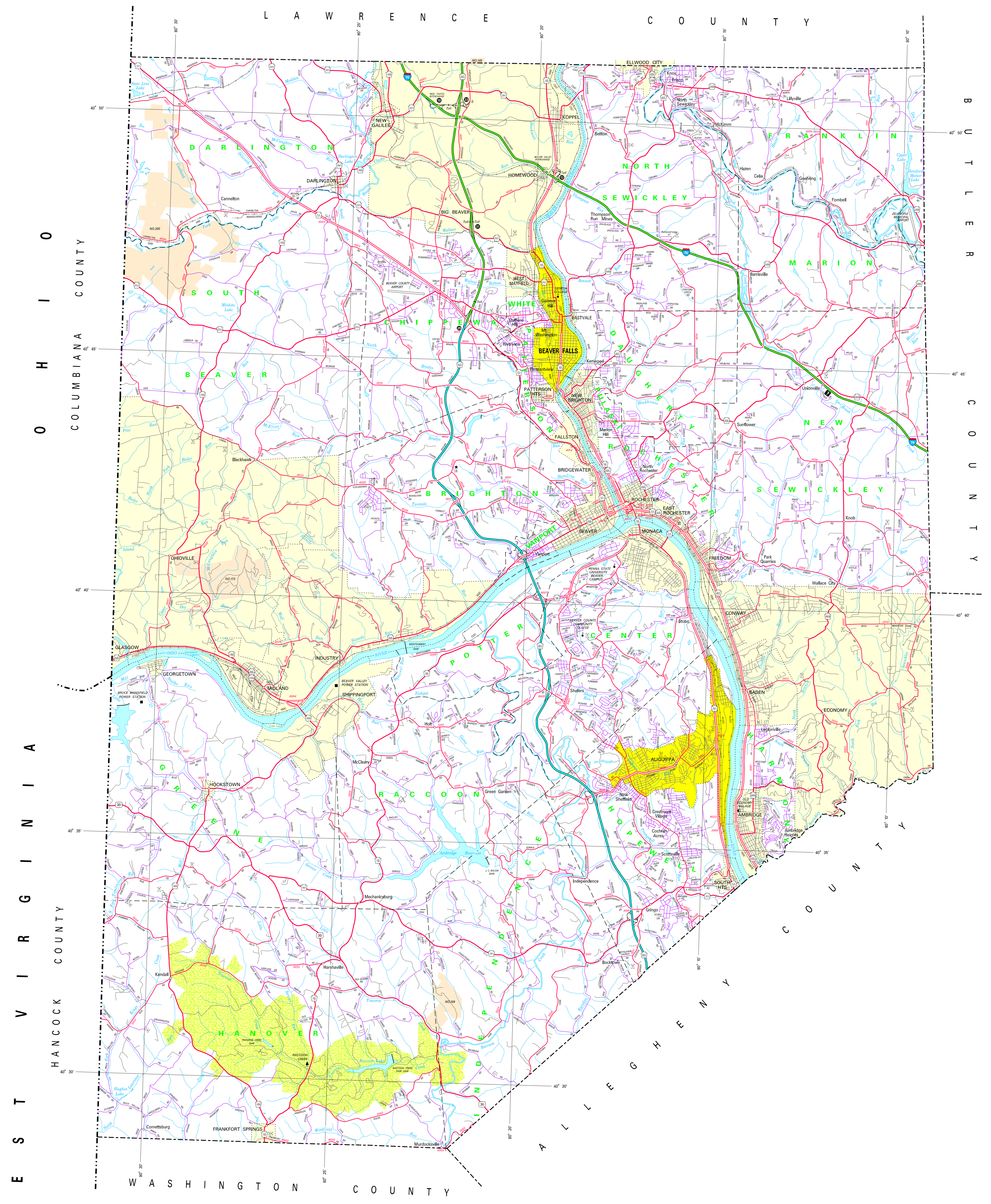
**ROUTE NAME AND NUMBER CONVERSION TABLE**  
PA Route # - Before Value / Pennsylvania Title

ROUTE NAME	ROUTE #	OLD EXIT #	NEW EXIT #
Chambers	PA 32	10	37
Beaver Falls	PA 101	10	31
PA Turnpike Exit 10	Beaver Falls	10	31

**INTERSTATE TO Pennsylvania Turnpike**

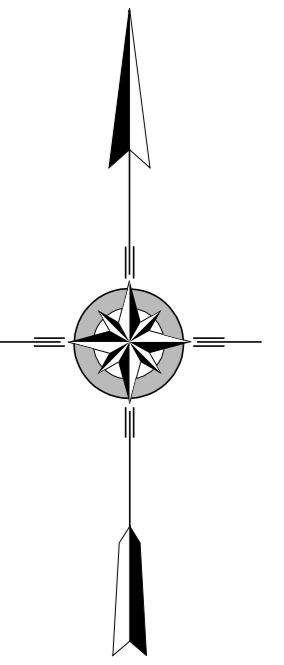
ROUTE NAME	ROUTE #	OLD EXIT #	NEW EXIT #
Beaver Valley	PA 10	2	12



COPIES OF THIS MAP ARE AVAILABLE AT NORMAL COST CONTACT:  
 PENNSYLVANIA DEPARTMENT OF TRANSPORTATION  
 DISTRIBUTION SERVICES UNIT  
 P.O. BOX 2020  
 HARRISBURG, PENNSYLVANIA 17105  
 TELEPHONE: (717) 757-6106

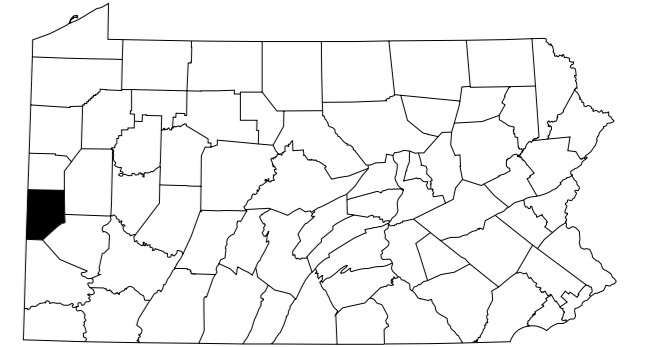
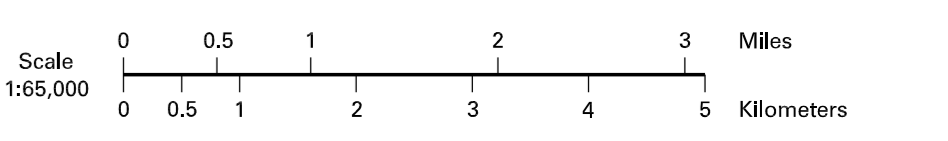
USERS NOTING ERRORS OR OMISSIONS ON THIS MAP ARE URGED TO REPORT THEM TO:  
 PENNSYLVANIA DEPARTMENT OF TRANSPORTATION  
 BUREAU OF PLANNING & RESEARCH  
 GEOGRAPHIC INFORMATION DIVISION  
 P.O. BOX 2024  
 HARRISBURG, PENNSYLVANIA 17105-2024  
 COPYRIGHT - COMMONWEALTH OF PENNSYLVANIA  
 DEPARTMENT OF GENERAL SERVICES

Printed on Recycled Paper



2002  
**GENERAL HIGHWAY MAP**  
**BEAVER COUNTY**  
**PENNSYLVANIA**

PREPARED BY THE  
 PENNSYLVANIA DEPARTMENT OF TRANSPORTATION  
 BUREAU OF PLANNING AND RESEARCH  
 GEOGRAPHIC INFORMATION DIVISION  
 IN COOPERATION WITH THE  
 U.S. DEPARTMENT OF TRANSPORTATION  
 FEDERAL HIGHWAY ADMINISTRATION



POPULATION OF COUNTY (1990 Census).....18,412  
 AREA OF COUNTY (SQ. MI.).....1,487  
 (SQ. KM.).....3,868  
 POLYCONIC PROJECTION - NAD 83 DATUM