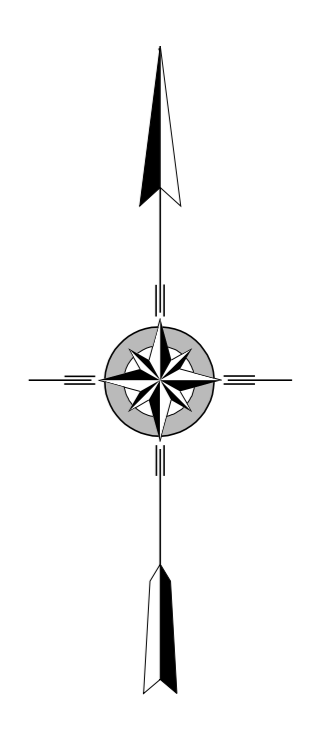
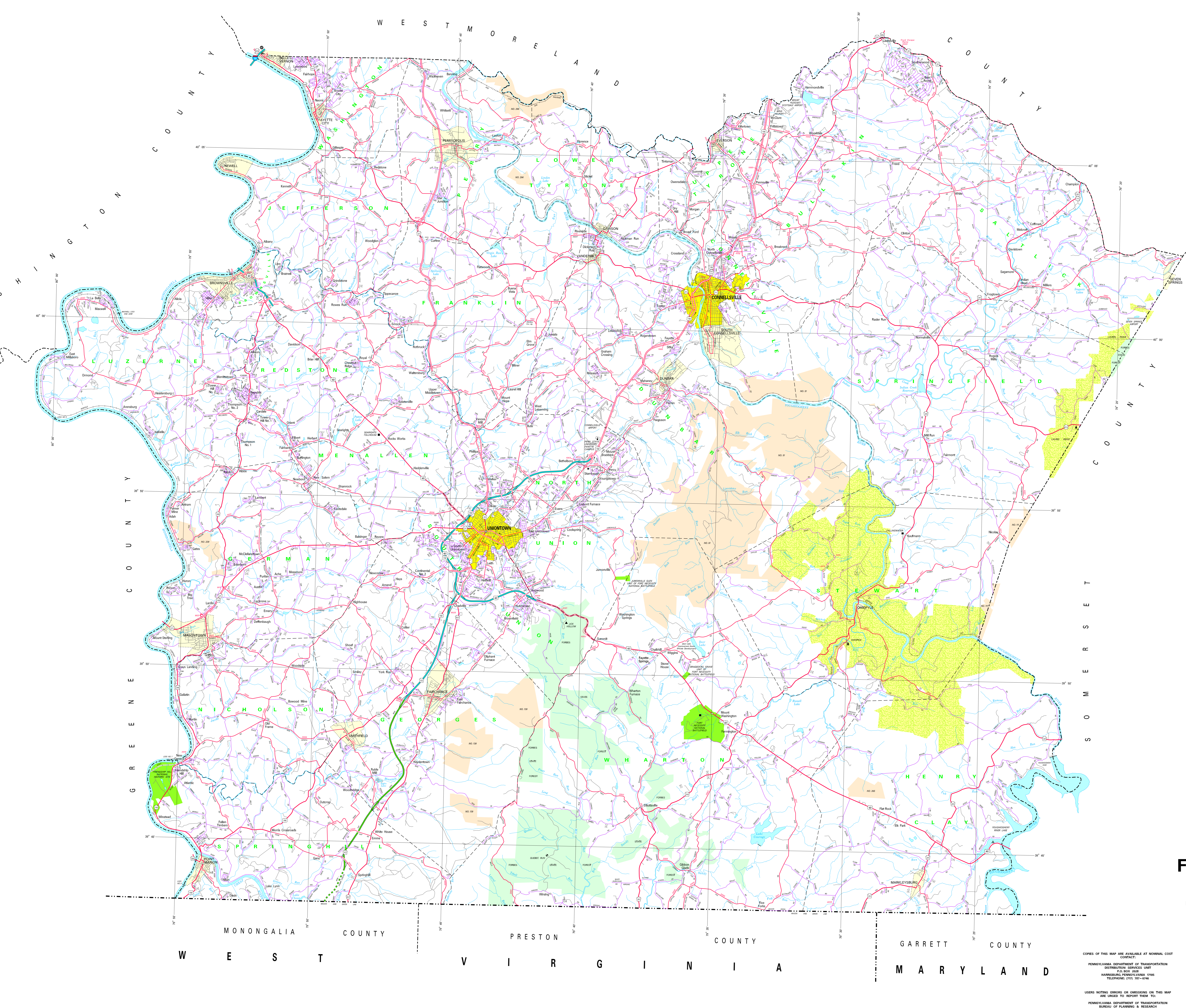


- LEGEND**
- FULLY CONTROLLED ACCESS HIGHWAY
  - MULTILANE HIGHWAY
  - TRUNK ROUTE
  - FEEDING STATE ROAD AND EXCHANGES
  - STATE MAINTAINED BRIDGE
  - TOWNSHIP ROAD
  - TOWNSHIP ROAD (UNPAVED / UNIMPROVED)
  - OTHER ROAD
  - INTERSTATE INTERCHANGE NUMBER
  - INTERSTATE TRUNK ROUTE
  - LIMITED ACCESS TRUNK ROUTE
  - PENNSYLVANIA TRUNK ROUTE
  - PAVING BY SEVERAL
  - PAVING ASSOCIATED STRIPS RETURNED
  - STATE LINE
  - COUNTY LINE
  - TOWNSHIP LINE
  - INCORPORATED CITY
  - INCORPORATED BOROUGH
  - STATE CAPITAL
  - COUNTY SEAT
  - OTHER COMMUNITIES
  - COLLEGE OR UNIVERSITY
  - STATE POLICE FACILITY
  - CORRECTIONAL INSTITUTION
  - STATE ADMINISTERED HISTORIC PROPERTY
  - FEDERAL STATE INSTITUTION
  - PORT OF FACILITY
  - FOYDS OF INTEREST
  - RAILROAD TRACK
  - RAILROAD
  - RAILROAD AND CONDUIT FACILITY
  - RAILROAD CENTER AND CONDUIT FACILITY
  - STATE FISH WARDENRY
  - STATE FOREST NATIONAL AREA
  - STATE FOREST PLANT AREA
  - FEDERAL RECREATION SITE
  - STATE PARK LAND (REACQUISITION)
  - STATE GAME LAND AND NUMBER
  - STATE AND FEDERAL FOREST LAND
  - FEDERAL PARK RECREATION LAND
  - FEDERAL RESERVATION



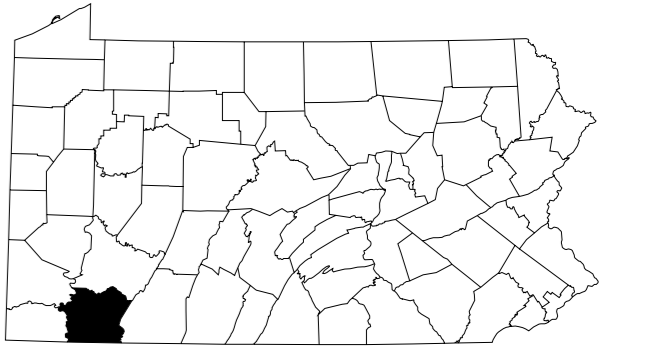
2002  
**GENERAL HIGHWAY MAP**  
**FAYETTE COUNTY**  
**PENNSYLVANIA**

PREPARED BY THE  
 PENNSYLVANIA DEPARTMENT OF TRANSPORTATION  
 GEOGRAPHIC INFORMATION DIVISION  
 IN COOPERATION WITH THE  
 U.S. DEPARTMENT OF TRANSPORTATION  
 FEDERAL HIGHWAY ADMINISTRATION



COPIES OF THIS MAP ARE AVAILABLE AT NOMINAL COST  
 CONTACT:  
 PENNSYLVANIA DEPARTMENT OF TRANSPORTATION  
 DISTRIBUTION SERVICES UNIT  
 1700 BIRCH CREEK  
 HARRISBURG, PENNSYLVANIA 17105  
 TELEPHONE: (717) 997-6396

USERS NOTING ERRORS OR OMISSIONS ON THIS MAP  
 ARE REQUESTED TO REPORT THEM TO:  
 PENNSYLVANIA DEPARTMENT OF TRANSPORTATION  
 BUREAU OF PLANNING & RESEARCH  
 GEOGRAPHIC INFORMATION DIVISION  
 1700 BIRCH CREEK  
 HARRISBURG, PENNSYLVANIA 17105 - 3054  
 COPYRIGHT © COMMONWEALTH OF PENNSYLVANIA  
 DEPARTMENT OF GENERAL SERVICES



POPULATION OF COUNTY 2000 Census: 148,644  
 AREA OF COUNTY 2000 Census: 864  
 ISO 3166-2: PA: 17  
 POLYCONIC PROJECTION - NAD 83 DATUM