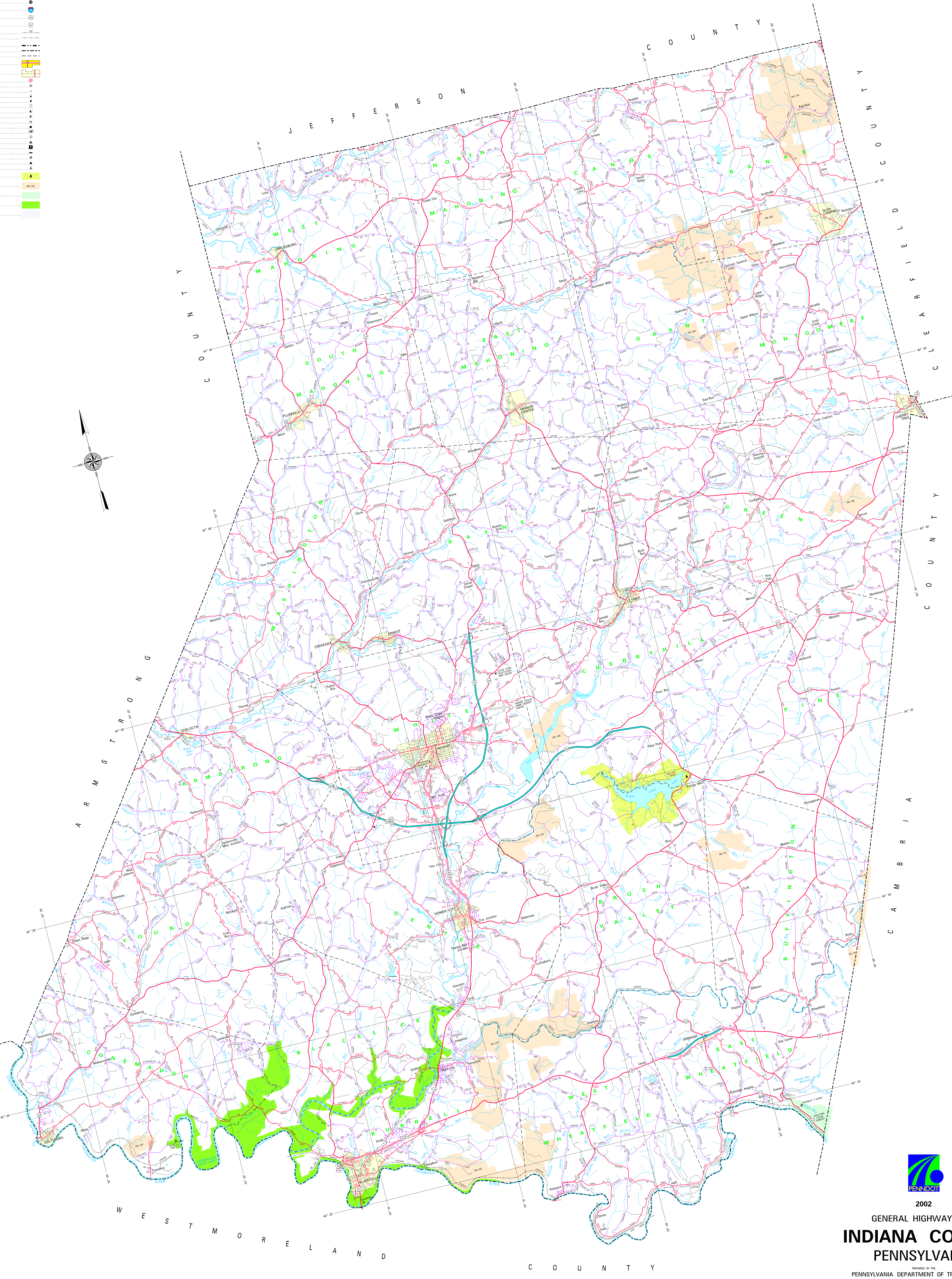
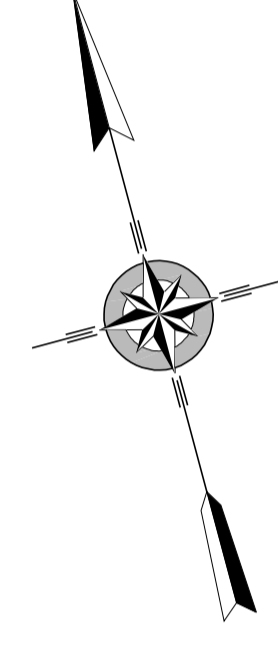


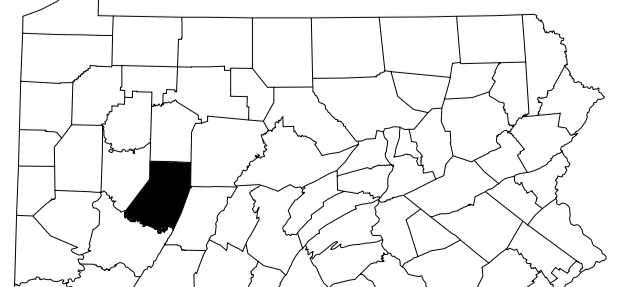
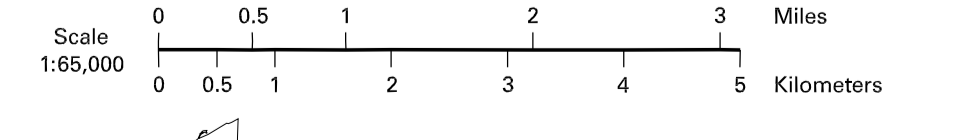
LEGEND

- FULLY CONTROLLED ACCESS HIGHWAY
- MULTI-LANE HIGHWAY
- TRUNK ROUTE
- MINOR STATE ROAD AND CENTER
- STATE MAINTAINED BRIDGE
- TOWNSHIP ROAD
- TOWNSHIP ROAD (UNPAVED)
- OTHER ROAD
- INTERSTATE REFERENCE NUMBER
- INTERSTATE TRUNK ROUTE
- UNPAVED STATE TRUNK ROUTE
- UNPAVED TRUNK ROUTE
- RAILROAD IN SERVICE
- RAILROAD ABANDONED (TRACK REMAINS)
- STATE LINE
- COUNTY LINE
- TOWNSHIP LINE
- INCORPORATED CITY
- INCORPORATED BOROUGH
- STATE CAPITAL
- COUNTY SEAT
- OTHER CEMETERIES
- COLLEGE OR UNIVERSITY
- STATE POLICE FACILITY
- COURT
- STATE ADMINISTERED HISTORIC PROPERTY
- FEDERAL STATE HISTORIC SITE
- FEDERAL DOT FACILITY
- POINT OF INTEREST
- HOME BASE TRUCK
- HELIPORT
- BEST AREA AND CORROSET FACILITY
- WELCOME CENTER AND CORROSET FACILITY
- STATE FISH HATCHERY
- STATE FOREST NATIONAL AREA
- STATE FOREST PLUNG AREA
- FEDERAL RECREATION SITE
- STATE PARK LAND - UNDEVELOPED
- STATE GAME LAND AND NUMBER
- STATE AND FEDERAL FOREST LAND
- FEDERAL PARK (RECREATION LAND)
- FEDERAL RECREATION



2002
GENERAL HIGHWAY MAP
INDIANA COUNTY
PENNSYLVANIA

PREPARED BY THE
 PENNSYLVANIA DEPARTMENT OF TRANSPORTATION
 BUREAU OF PLANNING AND RESEARCH
 GEOGRAPHIC INFORMATION DIVISION
 IN COOPERATION WITH THE
 U.S. DEPARTMENT OF TRANSPORTATION
 FEDERAL HIGHWAY ADMINISTRATION



POPULATION OF COUNTY 2000 Census 29,835
 AREA OF COUNTY (SQ. MI.) 255
 (SQ. KM) 2,197
 POLYCONIC PROJECTION - NAD 83 DATUM

COPIES OF THIS MAP ARE AVAILABLE AT NOMINAL COST
 CONTACT:

PENNSYLVANIA DEPARTMENT OF TRANSPORTATION
 DISTRIBUTION SERVICES UNIT
 P.O. BOX 3038
 HARRISBURG, PENNSYLVANIA 17105
 TELEPHONE: (717) 707-6746

USERS NOTING ERRORS OR OMISSIONS ON THIS MAP
 ARE URGED TO REPORT THEM TO:

PENNSYLVANIA DEPARTMENT OF TRANSPORTATION
 BUREAU OF PLANNING AND RESEARCH
 GEOGRAPHIC INFORMATION DIVISION
 P.O. BOX 3038
 HARRISBURG, PENNSYLVANIA 17105
 TELEPHONE: (717) 707-6746
 COPYRIGHT © 2002 PENNSYLVANIA
 DEPARTMENT OF GENERAL SERVICES