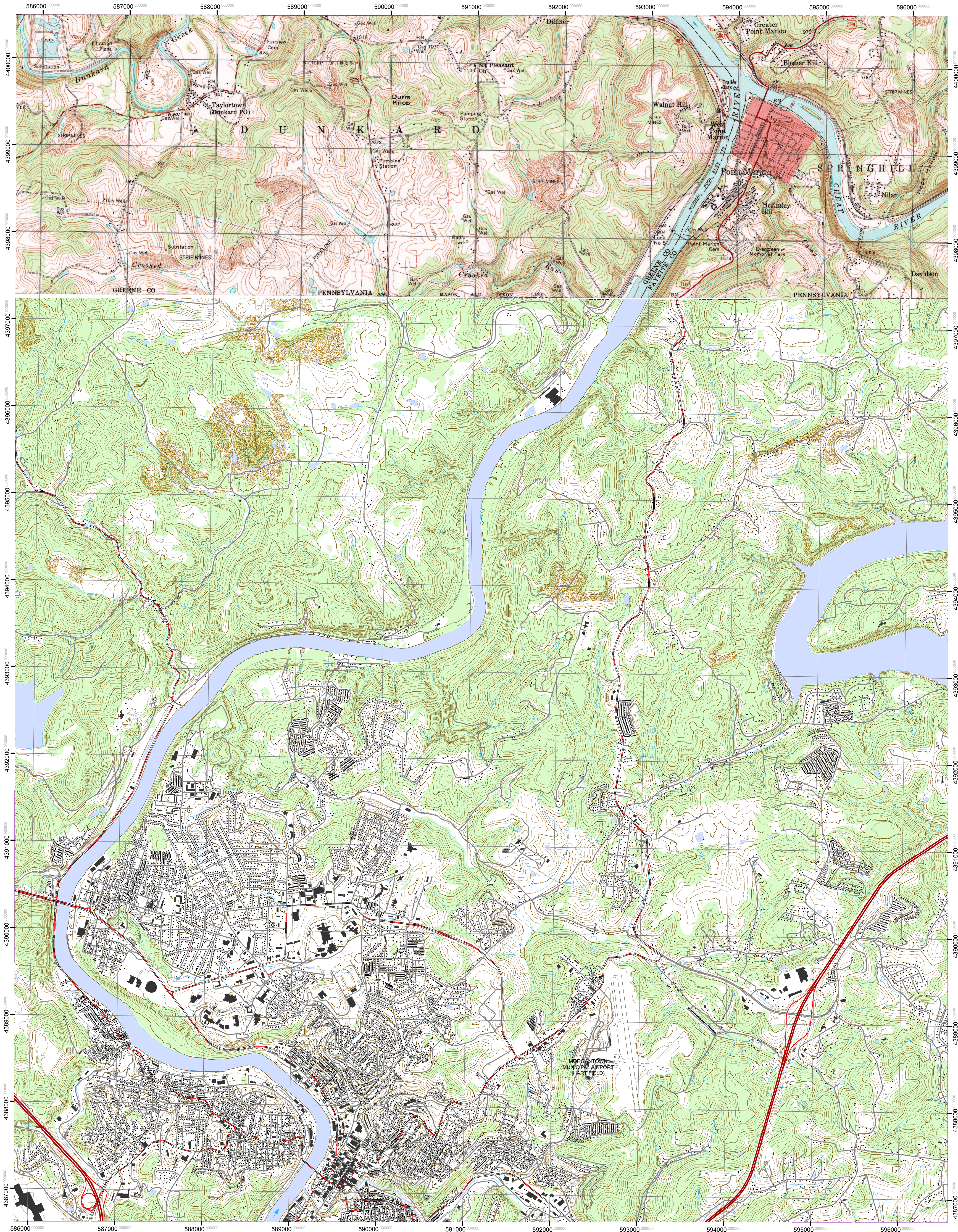




VERSION D

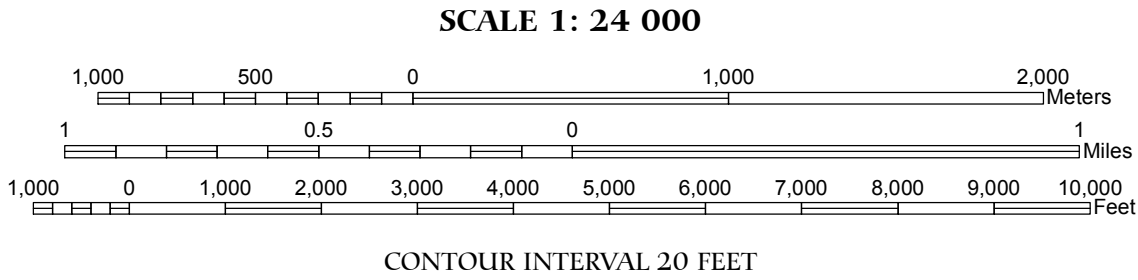
Road and Structure Data
(Urban Tint Not Shown)

MORGANTOWN NORTH QUADRANGLE
WEST VIRGINIA - PENNSYLVANIA
7.5-MINUTE TOPOGRAPHIC (DEMONSTRATION)



DATA SOURCES:
TOPOGRAPHY: Contours Derived from USGS NED 3M DEM
ROADS: US Census TIGER 2009
RAILROADS: WV SAMB 2003
STRUCTURES: Point and Polygon WVSAMB 2003
HYDROGRAPHY: WVSAMB 2003
URBAN TINT: (Not Shown)
FOREST TINT: WVGISTC (Data Source: NLCD 2001)
PA Data: USGS 7.5' Topographic Map (Morgantown North)

This map was created for demonstration of the Urban Tint and Forest Tint layers created from research performed by the West Virginia GIS Technical Center for the U.S. Geological Survey (USGS). This research was funded by USGS to identify data and methods to produce both Urban Tint (red) and Forest Tint (Green) layers for use in a digital mapping environment. This map demonstrates the resulting products in context with other data layers that may be used for digital map production. There are four map versions in this series. The only variant to each map version is the Urban Tint layer; the Forest Tint layer is the same. Version A shows Urban Tint generated from road data. Version B shows Urban Tint generated from structure data. Version C shows Urban Tint generated from both road and structure data. Version D shows only structure and road source data with no Urban Tint. For additional information see the technical report.



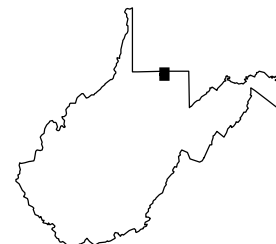
SCALE 1: 24 000
CONTOUR INTERVAL 20 FEET
D - R - A - F - T

Produced by the West Virginia GIS Technical Center
TO LEARN MORE ABOUT THIS MAP, PLEASE VISIT US ON THE WEB
[HTTP://WWW.WVGIS.WVU.EDU/](http://www.wvgis.wvu.edu/)

1	2	3
4	5	
6	7	8

1 Garards Fort
2 Masontown
3 Smithfield
4 Osage
5 Lake Lynn
6 Riverside
7 Morgantown South
8 Masontown

ADJOINING 7.5' QUADRANGLE NAMES



MORGANTOWN NORTH, WV-PA
2009
VERSION D